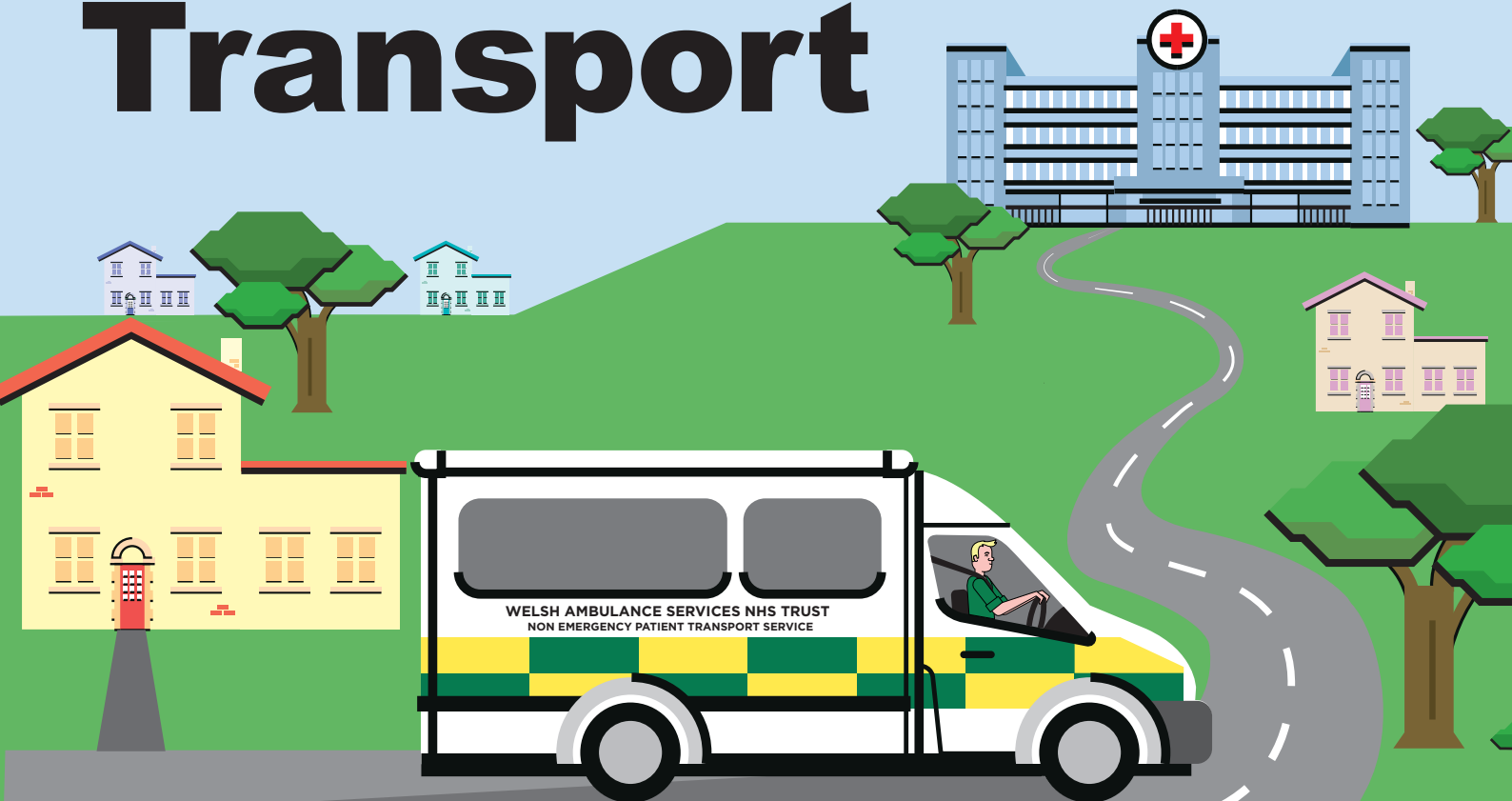




GIG
CYMRU
NHS
WALES

Ymddiriedolaeth GIG
Gwasanaethau Ambiwylans Cymru
Welsh Ambulance Services
NHS Trust

Non- Emergency Patient Transport



You could be eligible for transport
to hospital appointments

The Non-Emergency Patient Transport Service takes patients from across Wales who are unable for medical reasons, to make their own way to and from their hospital appointments. If you are not eligible, we can advise you of alternative transport methods more suitable to your needs.

To find out more information and see if you are eligible, please visit

www.ambulance.wales.nhs.uk or call **0300 123 2303**

